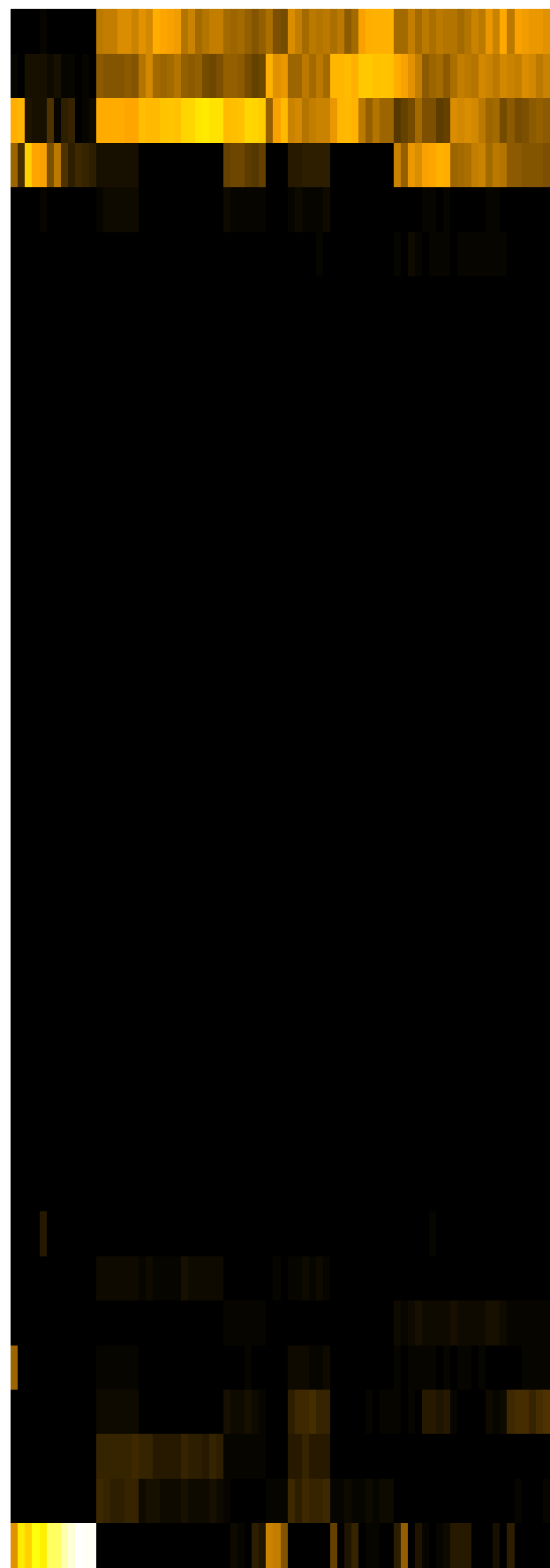
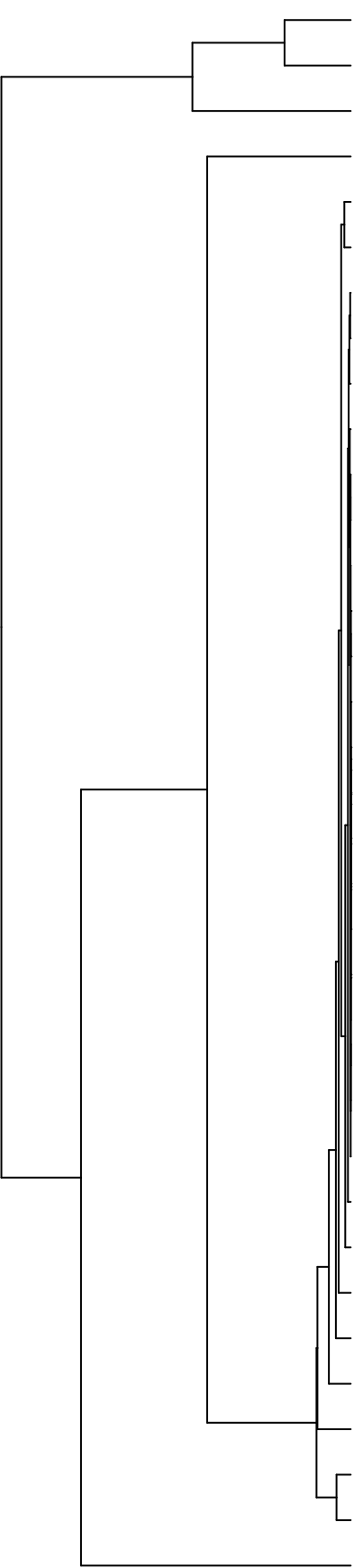


Group005
 Baseline
 Final H -PMA



- Pasteurellaceae
- Veillonellaceae
- Neisseriaceae
- Streptococcaceae
- Gemellaceae
- Actinomycetaceae
- Erysipelotrichaceae
- Saccharibacteria_(TM7)_[F-1]
- Lachnospiraceae
- Burkholderiaceae
- Atopobiaceae
- Absconditabacteria_(SR1)_[F-1]
- Flavobacteriaceae
- Sphingomonadaceae
- Moraxellaceae
- Mycobacteriaceae
- Yersiniaceae
- Pseudomonadaceae
- Microbacteriaceae
- Hymenobacteraceae
- Saccharibacteria_(TM7)_[F-2]
- Rhizobiaceae
- Phyllobacteriaceae
- Propionibacteriaceae
- Weeksellaceae
- Comamonadaceae
- Leptotrichiaceae
- Staphylococcaceae
- Prevotellaceae
- Carnobacteriaceae
- Micrococcaceae
- Fusobacteriaceae
- Campylobacteraceae
- Porphyromonadaceae
- Enterobacteriaceae

- F28914_S601
- F28914_S604
- F28914_S449
- F28914_S450
- F28914_S451
- F28914_S603
- F28914_S041
- F28914_S037
- F28914_S042
- F28914_S070
- F28914_S072
- F28914_S071
- F28914_S047
- F28914_S043
- F28914_S048
- F28914_S029
- F28914_S026
- F28914_S027
- F28914_S056
- F28914_S031
- F28914_S065
- F28914_S064
- F28914_S062
- F28914_S035
- F28914_S032
- F28914_S058
- F28914_S059
- F28914_S294
- F28914_S296
- F28914_S132
- F28914_S131
- F28914_S133
- F28914_S289
- F28914_S291
- F28914_S134
- F28914_S053
- F28914_S051
- F28914_S054

Family

Samples